

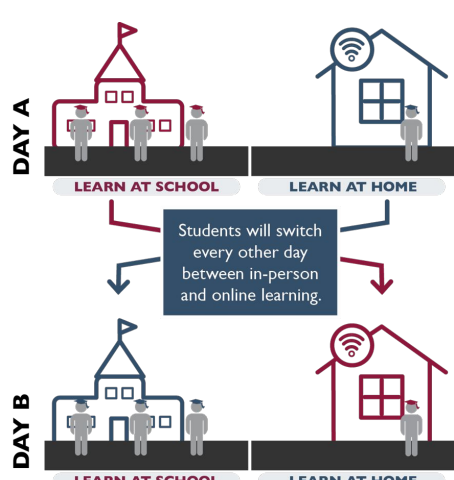
# Swegle Hybrid Learning Frequently Asked Questions



Swegle Office: 503-399-3191

## What is Hybrid Learning?

- Hybrid Learning combines in-person instruction with at-home learning.



## What are the In-Person School Hours?

- 7:45 - 1st Bell
- 8:00 - 2nd Bell (Tardy Bell)
- 1:00 - End of the Day

## What will the school day look like?

- 90 minutes of literacy (reading/writing)
- 45 minutes of math
- 30 minutes of social-emotional learning
- 30 minutes of English class, art, science, social studies, health, etc.
- Lunch/Recess

## How will Hybrid Learning start?

- Hybrid learning will begin with a staggered start.
- Grade levels waiting to start hybrid learning will continue with their distance learning schedule.
- Limited in-person instruction will end on February 26<sup>th</sup>.

## How will my child be safe at school?

All students attending in-person Hybrid Learning will:

- Maintain physical distancing
- Use face coverings
- Increase hand hygiene
- Have their own individual school supplies
- Learn and practice safety protocols



## Do not send your students to school if they have any COVID symptoms:

- Fever
- A persistent, new cough
- Sore throat
- Runny nose
- Nausea and vomiting, or diarrhea.
- Any student who has been exposed to someone with COVID should stay home.
- SKPS: When to keep my child home? [Click Here](#)
- SKPS: When to keep my child at home? Detailed. [Click here](#)

## School Supplies:

- Students will each have their own set of supplies
- See our website and Facebook page for what supplies to bring to leave at school-this is optional.
- Please do not send more supplies than are on the list.



## What should my child bring to school?

- A facemask
- A water bottle
- Their district-issued Chromebook

\*\*Please ensure all facemasks and water bottles are clearly labeled with student's first and last names.

## Items that should not come to school include:

- Hand sanitizer - the district will provide sanitizer safe for all students.
- Personal items such as toys, electronics, etc.

## What will "At Home Learning" look like?

- Students will attend online classes for PE or Music
- Students will read for at least 30 minutes each day
- Students will complete 1-2 hours of assignments from their teachers.
- Some students will participate in small group reading instruction online.
- Students will not meet with their classroom teacher online as they will be teaching the other cohort in person.

## What are cohorts?

- A cohort is a group of students that attends school in-person and online on the same days each week.
- Cohort A: Tuesday/Thursday
- Cohort B: Wednesday/Friday

COHORT A AND B				
Monday	Tuesday	Wednesday	Thursday	Friday
	Cohort A T/TH LEARN FROM SCHOOL	Cohort A T/TH LEARN FROM HOME	Cohort A T/TH LEARN FROM SCHOOL	Cohort A T/TH LEARN FROM HOME
	Cohort B W/F	Cohort B W/F	Cohort B W/F	Cohort B W/F
	LEARN FROM HOME	LEARN FROM SCHOOL	LEARN FROM HOME	LEARN FROM SCHOOL

## Where do I find my child's cohort?

- ParentVUE
- Your child's teacher
- Call Swegle 503-399-3191



## When will Hybrid Learning start?

- Kinder & 1st** grade students will start on **March 2<sup>nd</sup>**
- 2<sup>nd</sup> & 3<sup>rd</sup>** grade students will start on **March 9<sup>th</sup>**
- 4<sup>th</sup> & 5<sup>th</sup>** grade students will start on **March 16<sup>th</sup>**

## What if my student or someone else gets sick?

- They will be quarantined and made comfortable.
- School staff will call home immediately to have the family them up.
- Staff will contact the district health authority who, working with the county health authority will determine any exposures and any need to quarantine.
- If a student gets sick or injured and does not have COVID symptoms, they will be placed in a separate waiting area in the office where a school staff member will attend to their needs and call home if necessary.

## How will attendance work?

- Attendance will be taken as normal during in-person classes.
- Attendance will also be taken during at-home learning through work completion and virtual class attendance.

## What will drop off look like?

- Students can be dropped off as early as 7:45.
- K/1 students and siblings will be dropped off in the back by the gym.
- 2-5 students will be dropped off in the front by the covered area.
- All students will be screened for COVID symptoms before exiting their vehicles and/or entering the building.

## What will pick up look like?

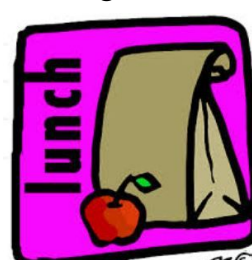
- Students will be picked up at 1:00pm
- K-1 students and their siblings will be picked up in the back by the gym.
- 2-5 students will be picked up in the front by the covered area.
- Walkers will be picked up by the flagpole.

## What about the bus?

- Bus service will be available for students who qualify.
- Due to limitations for groups of students on busses, families who are able to transport their students are encouraged to do so.
- Students who live over a mile away from the school qualify for bus service.
- Please visit the district website to find out if you qualify for bus service.

## What about breakfast and lunch?

- Students will eat in their classrooms
- Free breakfast and lunch will be provided to all students
- Students are welcome to bring their own lunch
- Free Grab-n-Go meals will be available for all students learning at home.



## What about recess?

- All students will get recess.
- K-2 students will get 2 recess.
- All students will participate in frequent brain breaks in the classroom.